



SASLHA's Monthly

Newsletter

Issue 4: March 2024



Dear SASLHA Community,

Welcome to the March 2024 edition of ECHO, marking the commencement of a new membership year brimming with promise and potential.

As we embark on this exciting journey, I invite you to immerse yourself in the pages of ECHO, to learn and to be inspired about the work of the association.

Together, let us write the next chapter of SASLHA's legacy—one of collaboration, growth, and boundless possibilities.

MAR '24 OVERVIEW

- 1 Member Value Proposition
- 2 Launching exciting opportunities to advance your career/practice
 - Leadership Course
 - Career Centre
 - Directory Member Spotlights
- 3 Spotlight on SASLHA's Committees
- 4 SASLHA's World Hearing Day Projects
- 5 Stakeholder Engagement: HPCSA, GTEDU, IPRI
- 6 Myrtle L. Aron Bursary Recipient

99
**Rise up
or
Rest up**
both are productive
& valid



1

MEMBER VALUE PROPOSITION

As part of our ongoing commitment to enhancing your experience and providing unparalleled support, we shared **SASLHA's Member Value Proposition (MVP)** with you during the month of February.

At its essence, the SASLHA MVP serves as a blueprint for the **exceptional value and advantages you receive as a member of our community**. It outlines the unique opportunities, resources, and support systems available to you, designed to elevate your professional journey and foster your growth and success in the field of speech therapy and audiology.

[LEARN MORE](#)

LAUNCH OF EXCITING OPPORTUNITIES TO ADVANCE YOUR CAREER/PRACTICE

2



THE EXCLUSIVE INTERPROFESSIONAL TEAM & COLLABORATION LEADERSHIP COURSE FOR SPEECH THERAPISTS & AUDIOLOGISTS

- SASLHA expresses gratitude to Prof. Juan Bornman and Prof. Brenda Louw for offering their course exclusively to our members. This **online self-study program** is designed to equip SLTs with essential leadership skills. Participants will gain insights into **IPC dynamics, enhance team communication, develop self-management techniques, and improve problem-solving abilities in clinical settings**.
- Completing this course not only enhances professional credentials but also enables SLTs to advocate for change and provide high-quality, culturally responsive care. Whether newly graduated or seasoned professionals, this course empowers SLTs to elevate their leadership skills and positively impact their workplace.

[WATCH THE LAUNCH WEBINAR](#)[MORE ON THE COURSE](#)

CAREER CENTRE

Whether you're a practice looking to expand your team or a professional seeking the next step in your career, the SASLHA Career Centre is designed to meet your unique needs as it offers a **seamless connection between exceptional talent and exciting job opportunities!**



DIRECTORY MEMBER SPOTLIGHTS

Take advantage of an opportunity for **premium directory listing**, that would increase your profile visibility to help promote your practice.

Stay tuned for these two exciting benefits coming your way in April!



CPD COMMITTEE

- Planned and hosted to **3 Edu-Series events** this year
- 4 March 2024: **Mindfulness** in audiology and other healthcare professions
- 19 March 2024: **Changing mindsets about acoustics in learning environments**
- 14 March 2024: Facilitated the **launch of the Leadership Course for SLTs**
- Shared a call for expression of interest-Speakers for SASLHA's Events

Upcoming: Virtual Edu-series events

APRIL: Communicating with complex trauma

MAY: Apraxia Symposium

JUNE: Surgical panel

JULY: Impact of sports on hearing loss

AUGUST: Pragmatics masterclass

SEPTEMBER: Adaptability intelligence

OCTOBER: Audiology (TBC)

NOVEMBER: Prematurity Symposium

*Please note that the program is still in development and subject to change



Committee Members:

Chair & Speech / Ethics Chief Editor: Tali Frankel; Audio Chief Editor: Jessica Paken; Ansa Jamal, Bianca Van Der Walt, Carol Legg, Katerina Ehlert, Nancy Barber, Nicole Chesler, Samantha Govender, Tamaryn Pike



ACCREDITATION COMMITTEE

- The accreditation committee is excited to welcome the **new Chair - Amisha Kanji and members Dhashini Naidoo and Kutloano Mtimkulu**. May their tenure with the committee be a joyful and productive one.
- SASLHA's accrediting services for CPD activities serve to uphold standards of excellence, promote continuous learning and development, and support the ongoing professionalisation of professions.

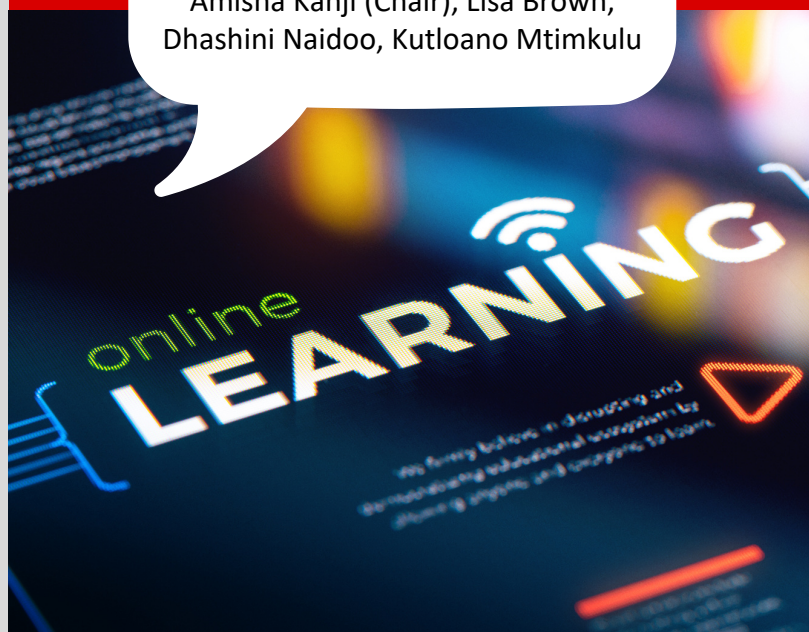


LEARN MORE



Committee Members:

Amisha Kanji (Chair), Lisa Brown, Dhashini Naidoo, Kutloano Mtimkulu





ETHICS COMMITTEE

- Reviewed Guidelines for Speech and Language Screening in preschools and schools
- Drafted a summary and interpretation of 'Amendments to the HPCSA Rules of Ethical Conduct'
- Contributed to the Summer edition of SASLHA's **E-Zine**: Summary of the amendments to the HPCSA rules of ethical conduct
- Managed and responded to ethical queries via **email & Ethics Bites** (Special Interest WhatsApp Group)

Committee Members:

Erika Bostock (Chair), Alison Dent, Carin Lichtenstein, Inge Burger, Ingrid von Bentheim, Rizwana Mallick, Samantha Coetzee



MENTORSHIP COMMITTEE

- Watch this space for upcoming announcements about **SASLHA's Mentorship Programme**

Committee Members:

Casey Eslick (Chair), Alison Dent, Amber Craps, Kutloano Mtimkulu, Tayla-Ann Macaskill



RESEARCH & EDUCATION COMMITTEE

- Reviewed and scored 31 2024 Myrtle L Aron Bursary applications
- Planning **SASLHA's AGM and Day Seminar** to be held 22 June 2024. Watch this space!

Committee Members:

Faheema Mahomed -Asmail (Chair), Anna-Mari Olivier, Nola Chambers, Rouxjeanne Vermeulen, Silva Kuschke



MEMBER ENGAGEMENT COMMITTEE

- The Membership Engagement Committee has been **actively promoting SASLHA and offering free membership to Community Service Officers (CSOs)**. Our efforts have focused on utilising social media platforms, creating engaging posts, targeted advertisements, and sharing these across various CSO groups to enhance SASLHA's visibility. One notable initiative includes the development of an **orientation video for all incoming CSOs**, which is **now available on YouTube**.
- **Student Membership:** Our strategy involves engaging with a different university each month to ensure continuous interaction with diverse academic environments, fostering ongoing growth and collaboration. Additionally, we plan to conduct in-person presentations about the benefits of SASLHA membership whenever feasible. This approach enhances our outreach efforts and promotes meaningful connections with students.
- Another exciting edition of the **E-Zine** has been compiled and shared with members.



Committee Members:

Michelle Frewen (Chair), Caitlin Bell, Cheron Rudolf, Naazneen Motala, Suewellyn Zimmermann



PRIVATE SECTOR COMMITTEE



Audiology Private Sector Committee

- Participated in **Audiology United matters specifically related to hearConnect**
- Part of the **New Zealand Audiological Society task team** to update practice standards
- Involved with **DOH** into the Policy Framework and Strategy for Ageing and Health
- **World Hearing Day:** Magda Meyer represented SASLHA on Tygerberg 104FM
- Assisted members with **ethics queries** related to private practice
- Assisted a medical aid to investigate a fraudulent claim

Committee Members:
Alida Naudé (Chair), Kayla Mc Farlane & Magda Meyer



Interested?

Contact alida@saslha.co.za

We extend a heartfelt invitation to speech therapists and audiologists from all backgrounds, experiences, and regions to become a part of the Committee



Speech Therapy Private Sector Committee

- Continued participation in the **NMES Task Team's discussions** with the HPCSA regarding the use of NMES
- Assisted members with **private practice related queries**

Committee Members:
Karyn Casey (Chair), Alison Dent, Ingrid von Bentheim, Rae Tovell-Holdt



PUBLIC SECTOR COMMITTEE

- Attended **SAPPF webinar** (Potential legal challenges of the NHI Bill)
- Attended **NHI Deep Dive** (Presented by Elsabe Klinck)
- Sharing news and resources via the **Public Sector WhatsApp group**
- **Southern Africa Outcomes Measurement & Reporting Conference** attended by chairperson.

Committee Members:
Lyndall Botha (Chair),
Lyndall Roach, Mariëtte Du Plessis, Pravisha Ramu



The Public Sector endeavours to be the voice of the Public Sector Speech-Language Therapists and / or Audiologists within SASLHA to ensure the interests of public sector therapists are acknowledged and addressed.

New committee members welcome!

Contact publicsector@saslha.co.za

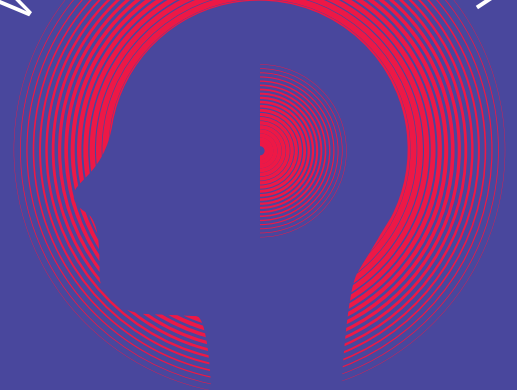


WORLD HEARING DAY PROJECTS

SASLHA was involved in a number of activities to promote World Hearing Day

- **Poster translations:** Translations of WHO posters in IsiXhosa, IsiZulu, Setswana, Sesotho, Sepedi, XiTsonga and Tshivenda available [here](#) and on the WHO website
- **Radio interviews:** Tygerberg 104FM, RSG, Lotus FM
- **TV interview:** eNCA

WORLD HEARING DAY



CHANGING MINDSETS

Let's make ear and hearing care a reality for all!

03 March 2024 #WorldHearingDay

STAKEHOLDER ENGAGEMENT

5

- **HPCSA:** Ingoing discussions regarding the use of NMES
- **GTEDU:** A member of SASLHA's Literacy Task Team, Tarryn Stevens, recently met with Dr. Ramsay from the Gauteng Department of Education to explore a potential collaboration. The aim is to leverage the expertise of speech therapists in the domains of literacy and language, in conjunction with the teacher assistants currently deployed in schools and Early Childhood Development (ECD) centres
- **Interprofessional Rehabilitation Indaba (IPRI):** SASLHA is hosting this year's IPRI meetings.
- **Current members:** Occupational Therapy Association of South Africa, South African Society of Physiotherapy; Medical Orthotics and Prosthetics Association of South Africa, South African Speech-Language-Hearing Association, South African Association of Audiologists, Rural Rehab South Africa
- During a meeting held on 12 March 2023, the following key items formed part of discussions and we endeavour to provide further detail:
 - Mid-level worker training: OTASA and RuReSA
 - Follow up on an offer to meet with Dr Luvuyo Bayeni (Chief Director of HR in the DoH)
 - FSDR Survey's significance as a comprehensive strategic document for rehabilitation in South Africa
 - COID: Letter to SAMA requesting engagement and the implications of the incorporation of Compensation Fund into the NHI framework
 - WHO Rehab 2030 Competencies and the IPRI's application to join the World Rehabilitation Alliance
 - Internship and Community Service Programme (ISCP)
 - Feedback on Presidential Health Compact and the IPRI's participation in Pillar 5 & 9
 - Engagements with Prof Nicholas Crisp re rehab services and NHI
 - DoH Standard Treatment Guidelines (STG)
 - Multidisciplinary coding proposal using the ICF and ICH (NHI)
 - UHC Rehabilitation Initiative
 - National Rehabilitation Indicators



6

MYRTLE L. ARON BURSARY RECIPIENT

We are thrilled to announce Maria Asghar Khan as the recipient of the 2024 Myrtle L. Aron Bursary. Maria, a dedicated third-year speech therapy student at Wits University, has demonstrated exemplary commitment to her studies. We extend our warmest congratulations to Maria and wish her continued success in her academic pursuits.

Congratulations

MARIA KHAN

3rd year Speech Therapy student at WITS

WINNER OF THE
MYRTLE L. ARON
BURSARY FUND



Join our WhatsApp
communities



Click [HERE](#) to join the
Social community
(open to all)



Click [HERE](#) to join the
Ethics community
(members only)



Public Sector
WhatsApp Community
- [Join us now!](#)
(members only)



As we conclude this month's newsletter, we want to extend our heartfelt appreciation for your steadfast support and unwavering enthusiasm. Looking ahead, we are eager to embark on another month filled with progress and fruitful collaboration. **Together, we remain dedicated to our mission of serving, empowering, and advancing the fields of Audiology and Speech Language Therapy.** Thank you for being an integral part of our journey!

SASLHA working with you!

Annaline Jack
SASLHA CEO

